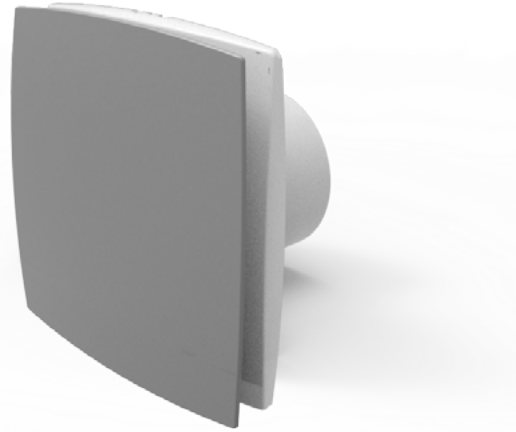


INSTALLATION GUIDE

AXIAL FANS

LD 100/125/150



INSTALLATION

Tools required



Pencil



Drill



Screwdriver



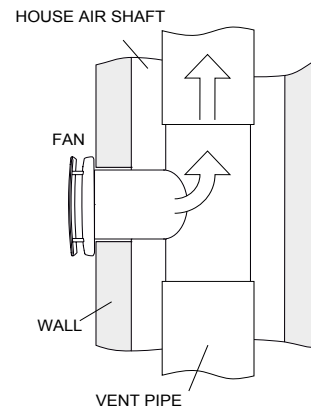
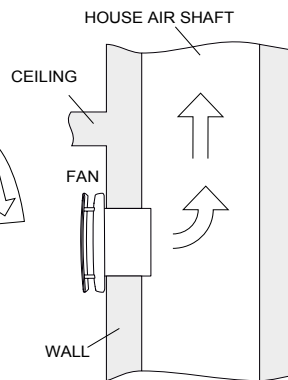
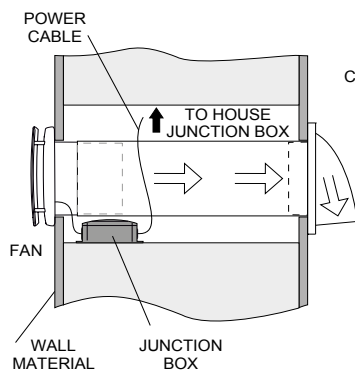
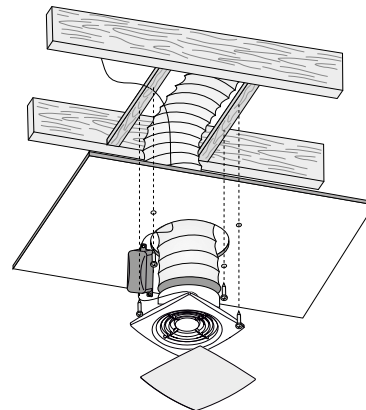
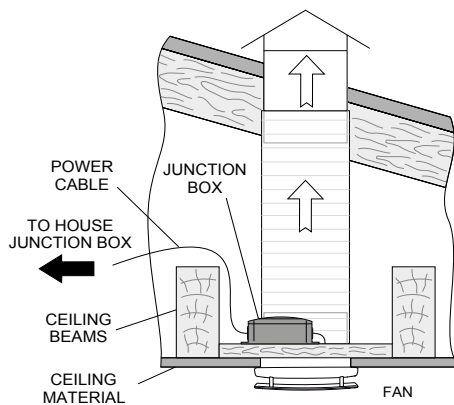
Dowel (4 pcs.)



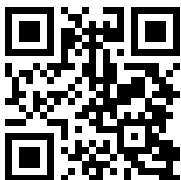
Screws (4 pcs.)

MOUNTING

The fan is designed for horizontal and vertical installation on the floor, on the wall or on the ceiling.

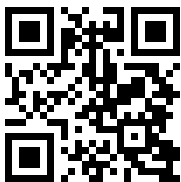
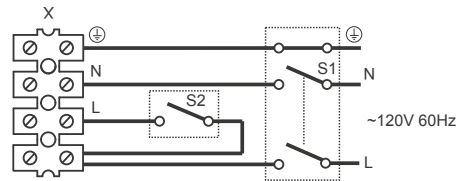
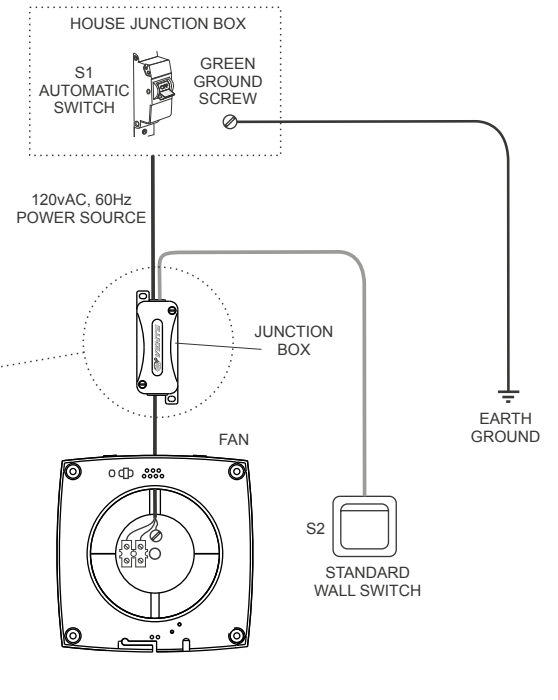
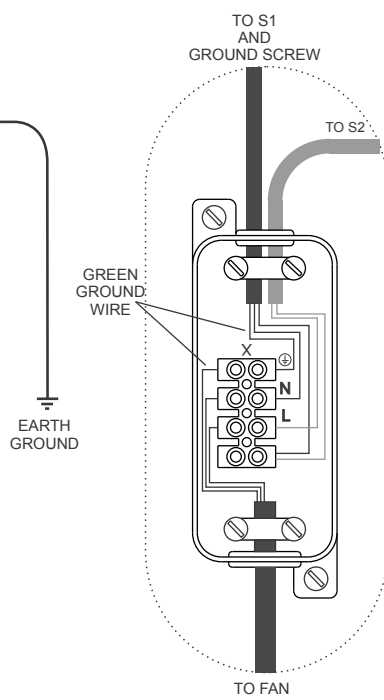
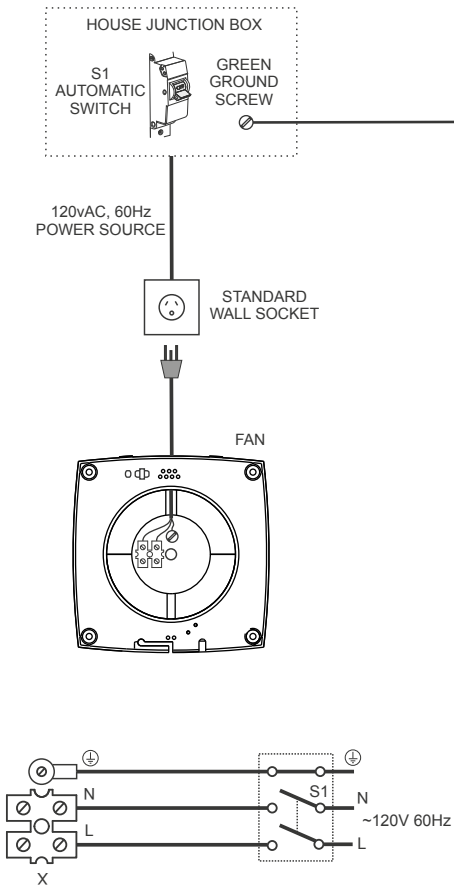


1.



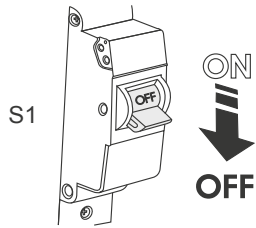
Electrical Connection of ventilation fan

Electrical connection of ventilation fan and standard wall switch

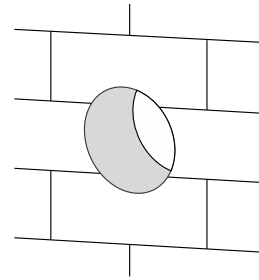


Mounting steps:

Step 1 - Cut off power supply and make sure that the power is disconnected

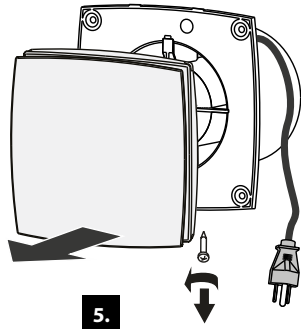


3.



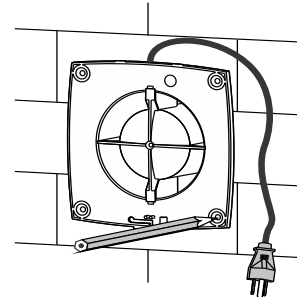
4.

Step 2 - Disconnect the front panel from the fan. Then remove the cover that covers the control board (Fig. 5).

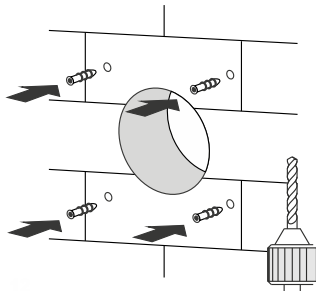


5.

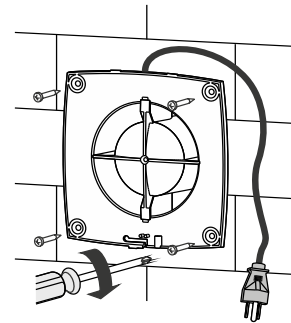
Step 3 - Mark and bore the fastening holes and install the fan (Fig. 6-8).



6.

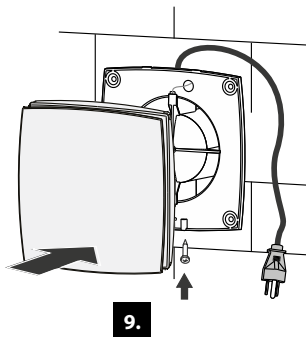


7.



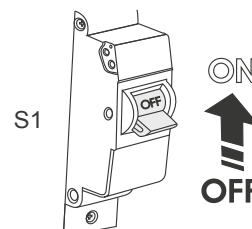
8.

Step 4 - Install the front panel (Fig. 9) and the decorative panel on the fan casing.



9.

Step 5 - Provide power supply to the fan (Fig. 10).



10.

Connect the fan to power supply in compliance with the wiring diagram (Fig. 2).



