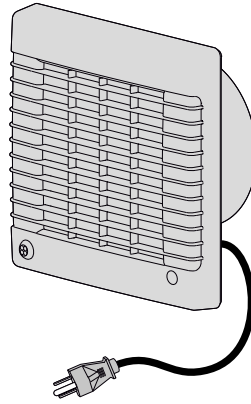


## INSTALLATION GUIDE

### AXIAL FANS

MA 100/125 /150



### INSTALLATION

#### Tools required



Pencil



Drill



Screwdriver



Dowel (4 pcs.)

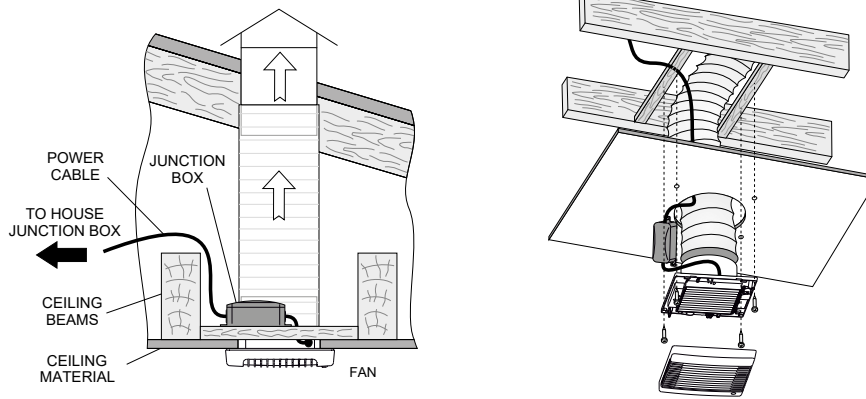


Screws (4 pcs.)

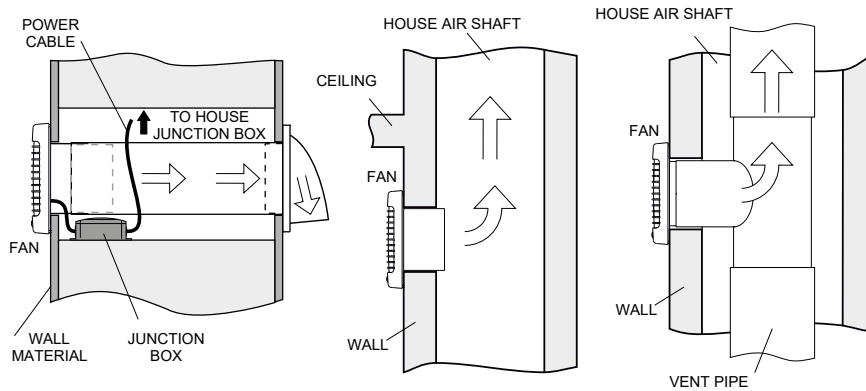
### MOUNTING

The fan is designed for horizontal and vertical installation on the floor, on the wall or on the ceiling.

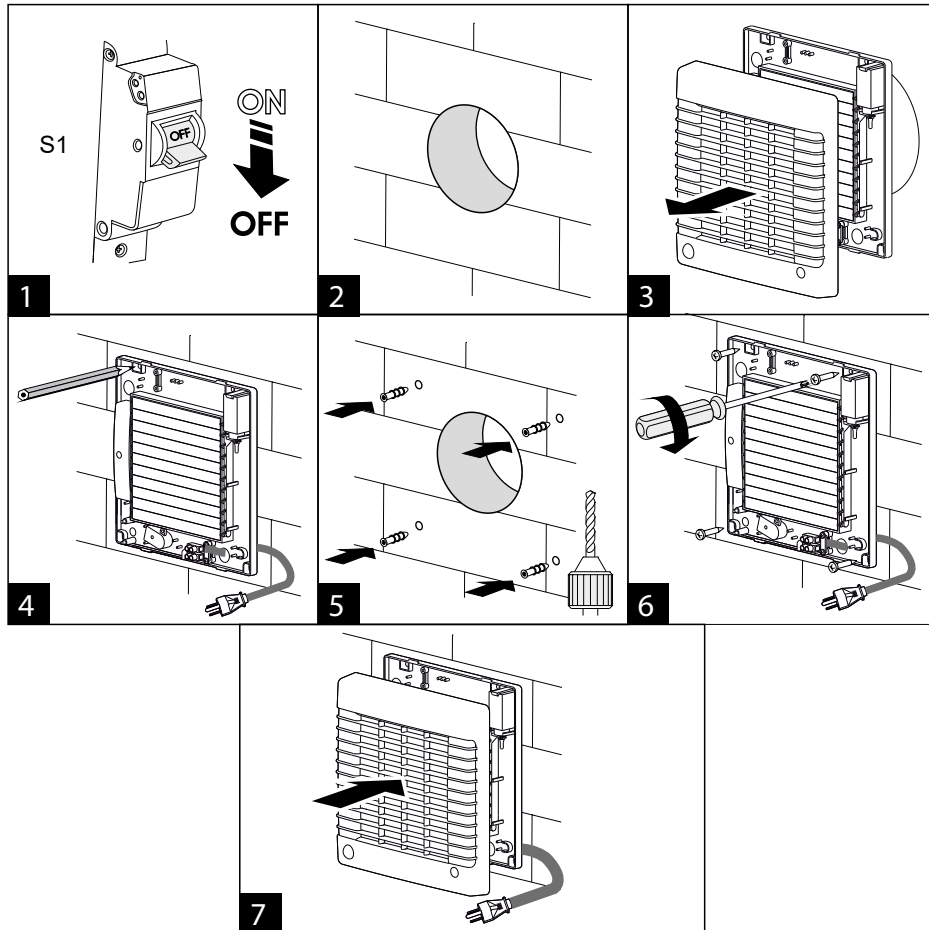
Typical installation in ceiling



Typical installation in wall

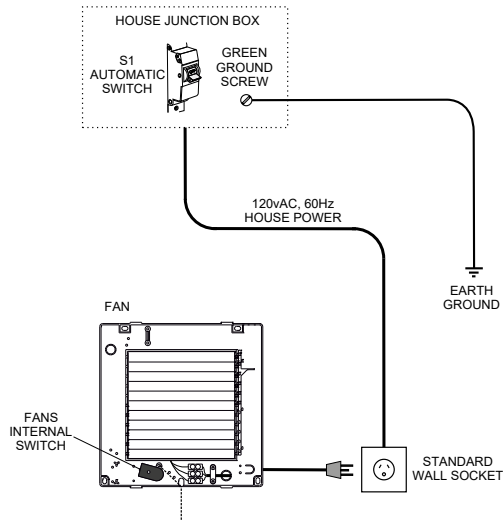


- 1) Disconnect the fan from power supply.
- 2) Make a hole in the wall.
- 3) Remove the decorative fan grille.
- 4) Mark holes on the wall.
- 5) Drill the holes and insert the expansion anchors.
- 6) Fix the fan.
- 7) Install the decorative fan grille.



Connect the cables according to the wiring diagram

Connection of the fan and standard wall socket



Connection of the fan and standard wall switch

