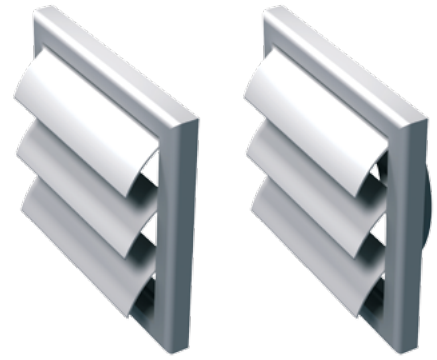


VENTILATION GRILLES MV 100 J, MV 120 J



INSTALLATION

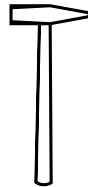
TOOLS REQUIRED



Pencil



Drill



Hammer



Phillips screwdriver

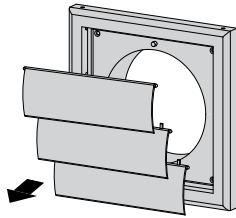


Dowel 4 pcs

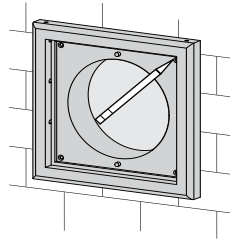


Screws 4 pcs

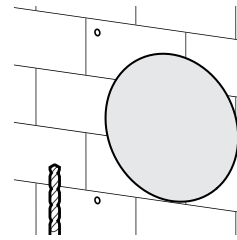
1 DISASSEMBLE THE GRILLE



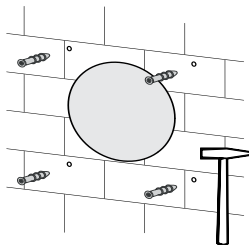
2 MARK HOLES FOR FASTENERS USING THE FRAME



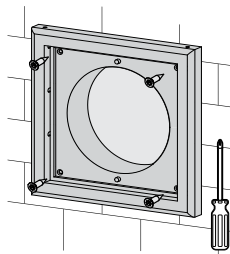
3 DRILL HOLES ON MOUNTING SURFACE ACCORDING TO THE MARKING



4 INSERT DOWELS IN THE HOLES



5 FIX THE FRAME TO A MOUNTING SURFACE WITH SCREWS



6 INSTALL THE LOUVRE SHUTTERS AND FIX THOSE ON THE FRAME WITH LATCHES

