

## INSTALLATION GUIDE

### INLINE MIXED-FLOW FANS

TT 100/125/150/200/250/315



### INSTALLATION

#### Tools required



Pencil



Drill



Screwdriver



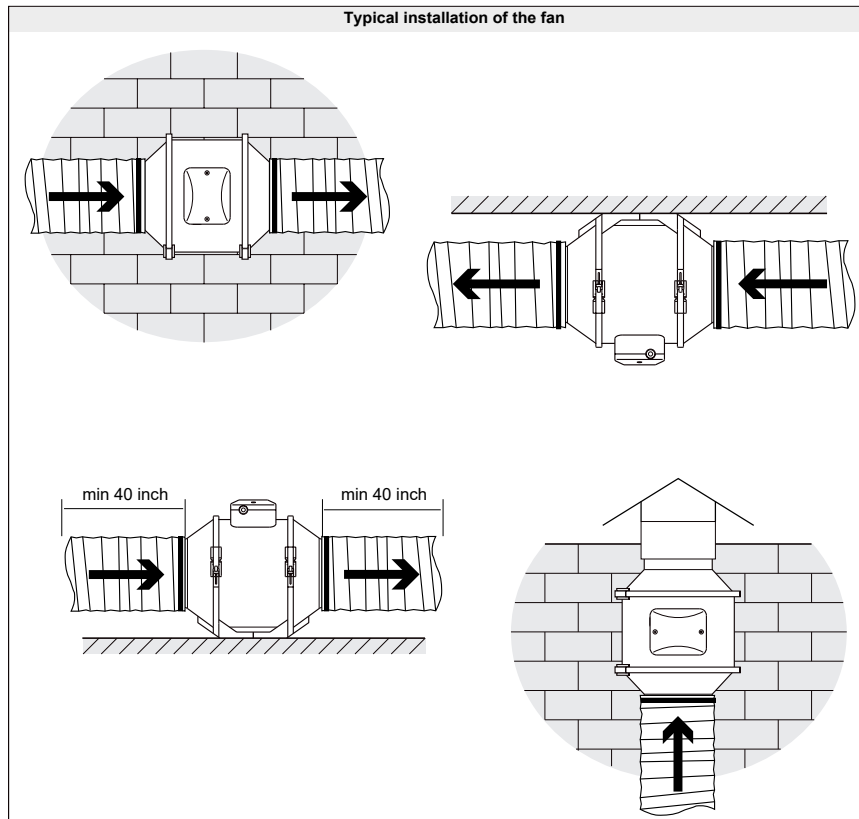
Dowel (4 pcs.)



Screws (4 pcs.)

### MOUNTING

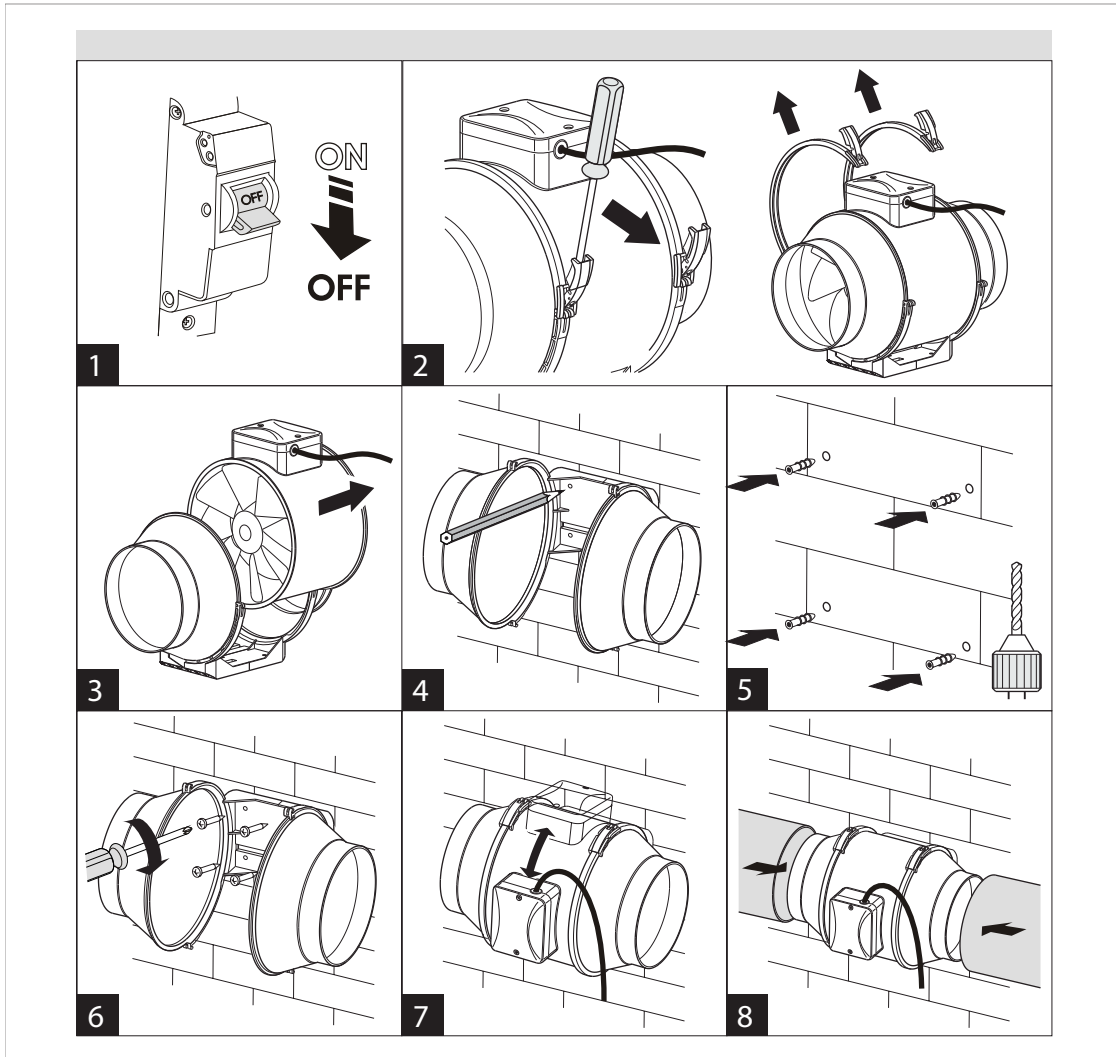
Fans may be mounted either vertically or horizontally. An air duct at least 40 inches long should be connected to an inlet flange in case of horizontal fan mounting; a canopy should be installed on an inlet flange in case of vertical mounting. Outlet flange should always be connected to an air duct.



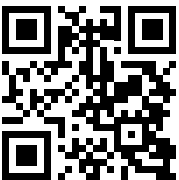
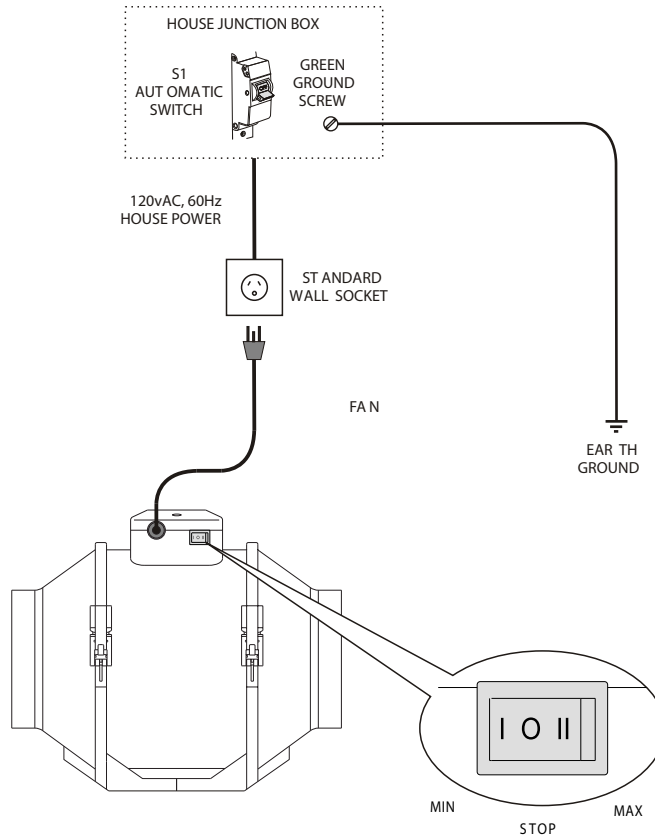
www.vents-us.com

Vents-US  
 400 Murray Road, Cincinnati, OH 45217, USA  
 Tel: 1-888-640-0925, 513-583-5786, Fax: 513-268-4597  
 E-mail: support@ventsus.com

- 1) Disconnect the fan from power supply.
- 2) Deinstall the fixing brackets.
- 3) Remove the fan from the casing.
- 4) Mark holes on the wall.
- 5) Drill the holes and insert the expansion anchors.
- 6) Fix the fan.
- 7) Install the fan into the casing
- 8) Connect air ducts



Connection of the fan and standard wall socket



The fan must be connected using durable, insulated and heat-resistant cables and wires.

- 1) Disconnect the fan from power supply.
- 2) Remove the cover from the terminal block.
- 3) Remove the cable clamp.
- 4) Connect the cables according, install the cable clamp.
- 5) Install the terminal block cover
- 6) Connect the fan from power supply.

