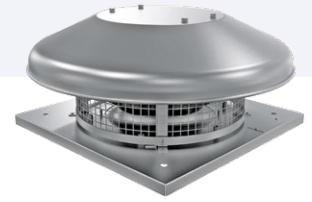


VKHCA EC SERIES

Aluminum roof fans

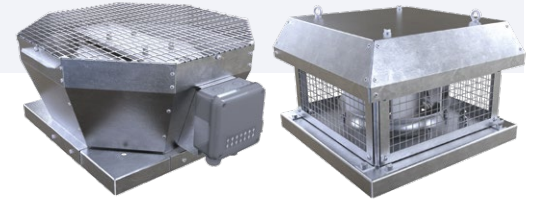


- Air flow capacity: up to **8028** CFM
- Power consumption: **95-2412** W
- Sound level: **47-69** Sones

Model	Speed	Noise pressure level @ 3m [dB(A)]	Power [W]	Current [A]	Volts	CFM Static Pressure [PS] in.W.G										
						0"	0.1"	0.2"	0.3"	0.4"	0.5"	0.6"	0.7"	0.8"	0.9"	1"
VKHCA 190 EC	3538	52	110	0.87	1~230	453	445	435	427	415	412	400	386	374	364	344
VKHCA 225 EC	2478	47	95	0.8	1~230	795	754	711	669	626	584	540	499	454	412	347
VKHCA 250 EC	3310	54	164	1.25	1~230	883	871	863	856	848	836	824	800	777	731	683
VKHCA 280 EC	2610	48	195	1.53	1~230	1413	1389	1371	1324	1290	1230	1177	1118	1047	971	883

VKVA/VKHA EC SERIES

Aluminum roof fans



- Air flow capacity: up to **10753** CFM
- Power consumption: **101-2973** W
- Sound level: **47-69** Sones

Model	Speed	Noise pressure level @ 3m [dB(A)]	Power [W]	Current [A]	Volts	CFM Static Pressure [PS] in.W.G										
						0"	0.1"	0.2"	0.3"	0.4"	0.5"	0.6"	0.7"	0.8"	0.9"	1"
VKVA/VKHA 190 EC	3520	52	102	0.77	1~230	394	387	377	371	364	353	344	331	318	294	283
VKVA/VKHA 225 EC	2400	47	101	0.8	1~230	759	718	681	636	594	559	519	470	423	353	294
VKVA/VKHA 250 EC	3300	54	161	1.29	1~230	895	873	859	845	824	800	792	760	727	696	662
VKVA/VKHA 280 EC	2610	48	182	1.34	1~230	1371	1330	1239	1177	1083	1036	989	960	902	848	809
VKVA/VKHA 310 EC	2600	49	391	1.72	1~230	1825	1773	1725	1667	1613	1561	1471	1413	1371	1324	1283
VKVA/VKHA 355 EC	1550	51	669	4.95	1~230	2254	2178	2178	2154	2115	2078	2039	2002	1972	1926	1886
VKVA/VKHA 400 EC	1450	58	526	3.9	1~230	3167	3093	3014	2935	2855	2777	2696	2590	2531	2354	2248
VKVA/VKHA 450 EC	1560	63	1323	3.27	3~400	4773	4767	4694	4615	4534	4414	4374	4238	4212	4136	4061
VKVA/VKHA 500 EC	1480	67	1350	2.08	3~400	6416	6351	6239	6121	5998	5980	5830	5697	5650	5533	5297
VKVA/VKHA 560 EC	1540	69	2412	3.83	3~400	8028	7946	7882	7768	7651	7538	7469	7416	7328	7181	7063
VKVA/VKHA 630 EC	1450	71	2973	4.66	3~400	10753	10594	10589	10442	10274	10124	10124	9947	9888	9770	9535