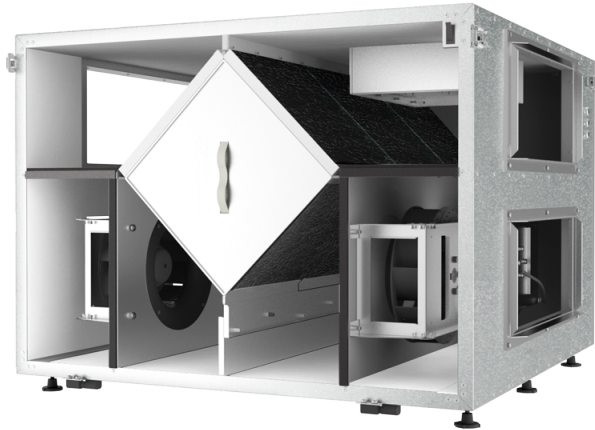


AIRLITE ERV 13 EC



Energy and heat recovery ventilators for commercial applications featuring advanced EC (Electronically Commutated) motor technology.

- Heat exchanger type: Cross flow
- Motor type: EC
- Enthalpy heat exchanger
- Casing material: Galvanized steel
- Humidity sensor: Optional
- CO2 sensor: Optional

	Unit of measurement	AIRLITE ERV 13 EC
Connected air duct size	in	8×20"
Phases	-	1
Minimum supply voltage	V	120
Maximum supply voltage	V	120
Power supply frequency	Hz	60
Rated power	W	880
Unit current	A	
Maximum unit current	A	7.4
Maximum performance @0.1"	CFM	700
Heat recovery efficiency, max	%	63
Heat exchanger type	-	Cross flow
Heat exchanger material	-	Enthalpy
Transported air temperature (max)	°C	140
Transported air temperature (min)	°C	-35

Dimensions

