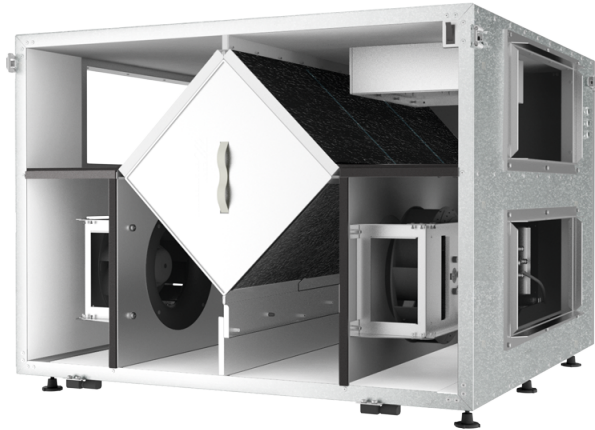


AIRLITE ERV 17



Energy and heat recovery ventilators for commercial applications

- Heat exchanger type: Cross flow
- Extract filter: MERV 6
- Supply filter: MERV 6
- Motor type: AC
- Enthalpy heat exchanger
- Casing material: Galvanized steel
- Humidity sensor: Optional
- CO2 sensor: Optional
- VOC sensor: Optional

	Unit of measurement	AIRLITE ERV 17
Connected air duct size	in	8×20"
Phases	-	1
Minimum supply voltage	V	120
Maximum supply voltage	V	120
Power supply frequency	Hz	60
Rated power	W	1330
Unit current	A	
Maximum unit current	A	11.1
Maximum performance @0.1"	CFM	1135
Heat recovery efficiency, max	%	56
Heat exchanger type	-	Cross flow
Heat exchanger material	-	Enthalpy
Extract filter	-	MERV 6
Supply filter	-	MERV 6
Transported air temperature (max)	°C	140
Transported air temperature (min)	°C	-35

Dimensions

