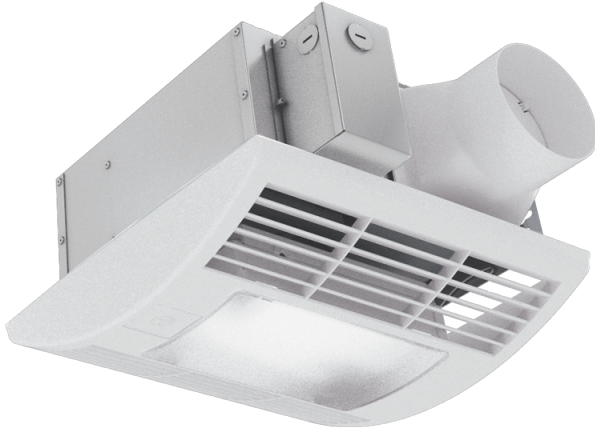


# CBF LP 110 Light

The CBF fans feature reliable asynchronous dual-speed motors with overheating protection

- Motor type: AC



	Unit of measurement	CBF LP 110 Light	
Connected air duct size	in	4"/6"	
Speed	-	2	
Minimum supply voltage	V	120	
Maximum supply voltage	V	120	
Power supply frequency	Hz	60	
Rated power	W	16.27	
Maximum unit current	A	0.17	0.23
Maximum performance @0.1"	CFM	62	110

## Dimensions

ØD	Ød	L1	L2	A	B	C	E	H	h	a	b
5 7/8"	3 7/8"	4"	1 3/4"	13"	10 1/8"	10 1/4"	15 1/2"	5 1/4"	2 1/2"	8 1/4"	4 7/8"

