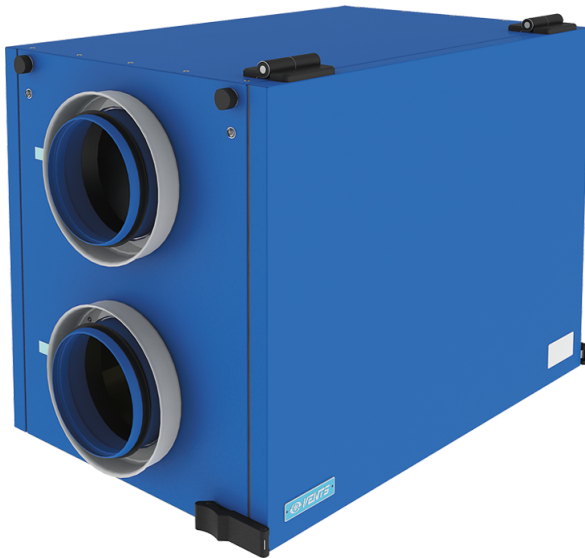


ERV 300



Energy Recovery Ventilators are the complete whole house ventilation system designed to bring a continuous supply of fresh air into the house while exhausting an equal amount of stale air

- Motor type: AC
- Enthalpy heat exchanger

	Unit of measurement	ERV 300
Connected air duct size	in	8"
Speed	-	1
Minimum supply voltage	V	120
Maximum supply voltage	V	120
Power supply frequency	Hz	60
Rated power	W	447
Maximum unit current	A	3.8
Maximum performance @0.1"	CFM	257
Ingress protection rating	-	IP22
Ingress protection rating of the drive	-	IP44

Dimensions

