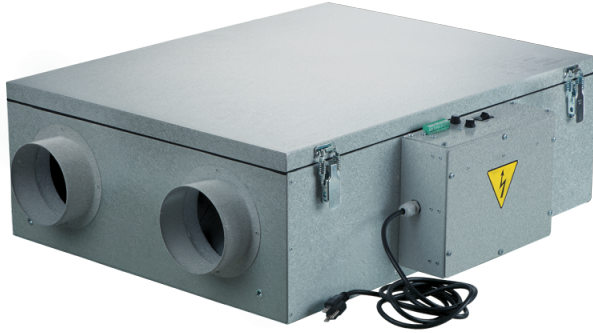


# Frigate ERV 120 EC

Energy Recovery Ventilators are the complete whole house ventilation system designed to bring a continuous supply of fresh air into the house while exhausting an equal amount of stale air

- Heat exchanger type: Cross flow
- Extract filter: Poret PPI 20/MERV6
- Supply filter: Poret PPI 20/MERV6
- Motor type: EC
- Enthalpy heat exchanger



	Unit of measurement	Frigate ERV 120 EC
Connected air duct size	in	5"
Speed	-	1
Minimum supply voltage	V	120
Maximum supply voltage	V	120
Power supply frequency	Hz	60
Rated power	W	198
Maximum unit current	A	2.5
Maximum performance @0.1"	CFM	
Minimum performance @0.4"	CFM	150
Heat exchanger type	-	Cross flow
Heat exchanger material	-	Enthalpy
Extract filter	-	Poret PPI 20/MERV6
Supply filter	-	Poret PPI 20/MERV6
Extract filter	-	MERV6
Ingress protection rating	-	IP22
Ingress protection rating of the drive	-	IP44

## Dimensions

