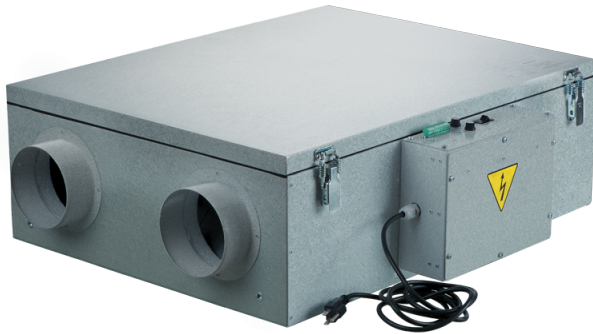


Frigate ERV 120 EC

Energy Recovery Ventilators are the complete whole house ventilation system designed to bring a continuous supply of fresh air into the house while exhausting an equal amount of stale air

- Heat exchanger type: Cross flow
- Heat exchanger material: Enthalpy
- Extract filter: Poret PPI 20/MERV6
- Supply filter: Poret PPI 20/MERV6
- Enthalpy heat exchanger



| | Unit of measurement | Frigate ERV 120 EC |
|--|---------------------|--------------------|
| Connected air duct size | in | 5" |
| Minimum supply voltage | V | 120 |
| Maximum supply voltage | V | 120 |
| Power supply frequency | Hz | 60 |
| Rated power | W | 156 |
| Maximum unit current | A | 2.5 |
| Minimum performance @0.4" | CFM | 150 |
| Heat exchanger type | - | Cross flow |
| Heat exchanger material | - | Enthalpy |
| Weight | lb | 44 |
| Extract filter | - | Poret PPI 20/MERV6 |
| Supply filter | - | Poret PPI 20/MERV6 |
| Extract filter | - | MERV6 |
| Ingress protection rating | - | IP22 |
| Ingress protection rating of the drive | - | IP44 |

Dimensions

