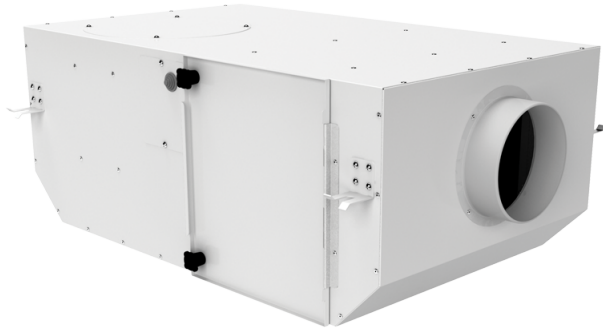


KSV 100 Duo

G4/F8/C

Centrifugal inline fans with forward curved blades in sound-insulated casings with filters

- Motor type: AC
- Impeller type: Centrifugal backward curved blades
- Casing material: Coated steel
- Installation in any position



	Unit of measurement	KSV 100 Duo G4/F8/C	
Connected air duct size	in	4"	
Speed	-	2	
Phases	-	1	
Minimum supply voltage	V	230	
Maximum supply voltage	V	230	
Power supply frequency	Hz	50/60	
Rated power	W	33	41
Maximum unit current	A	0.15	0.19
Ingress protection rating	-	IPX4	

Dimensions

ØD	L	H	B	L1	B1	L2	B2
4"	27 3/4"	9 7/8"	16 3/8"	31 5/8"	20"	25 5/8"	18"

