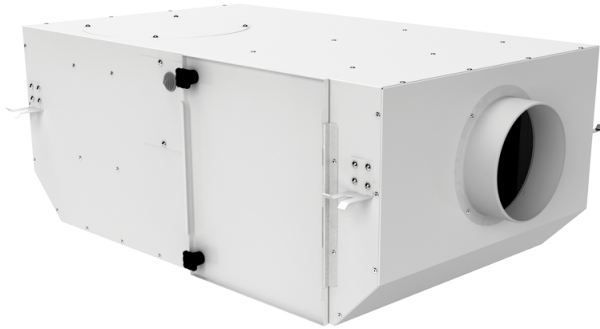


KSV 100 G4/F8/C

Sound-insulated centrifugal fans with filters. Designed for integration into supply and exhaust, ventilation systems requiring high cleaning of intake air, low-noise operation and limited mounting space

- Motor type: AC
- Impeller type: Centrifugal backward curved blades
- Casing material: Coated steel
- Installation in any position



| | Unit of measurement | KSV 100 G4/F8/C |
|---------------------------|---------------------|-----------------|
| Connected air duct size | in | 4" |
| Speed | - | 1 |
| Phases | - | 1 |
| Minimum supply voltage | V | 230 |
| Maximum supply voltage | V | 230 |
| Power supply frequency | Hz | 50/60 |
| Rated power | W | 53 |
| Maximum unit current | A | 0.27 |
| Maximum performance @0.1" | CFM | 106 |
| Ingress protection rating | - | IPX4 |

Dimensions

| ØD | L | H | B | L1 | B1 | L2 | B2 |
|----|---------|--------|---------|---------|-----|---------|-----|
| 4" | 27 3/4" | 9 7/8" | 16 3/8" | 31 5/8" | 20" | 25 5/8" | 18" |

