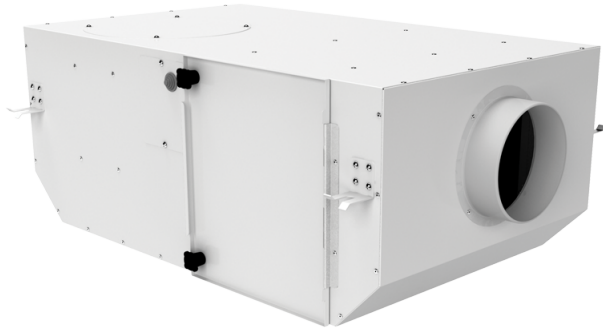


# KSV 150 Duo Q G4/F8/C

Centrifugal inline fans with forward curved blades in sound-insulated casings with filters

- Motor type: AC
- Impeller type: Centrifugal backward curved blades
- Casing material: Coated steel
- Installation in any position



	Unit of measurement	KSV 150 Duo Q G4/F8/C	
Connected air duct size	in	6"	
Speed	-	2	
Phases	-	1	
Minimum supply voltage	V	230	
Maximum supply voltage	V	230	
Power supply frequency	Hz	50/60	
Rated power	W	41	50
Maximum unit current	A	0.18	0.22
Ingress protection rating	-	IPX4	

## Dimensions

ØD	L	H	B	L1	B1	L2	B2
5 7/8"	29"	11 3/4"	17 3/8"	32 7/8"	21"	26 3/4"	19"

