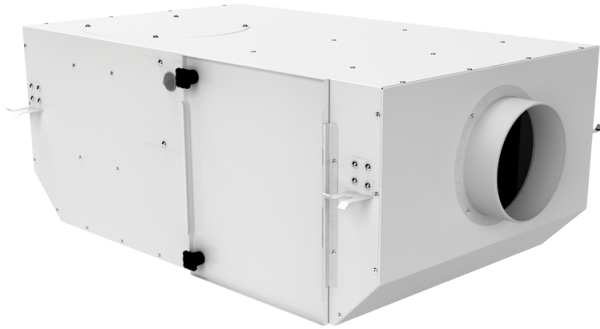


# KSV 150 G4/C

Sound-insulated centrifugal fans with filters. Designed for integration into supply and exhaust, ventilation systems requiring high cleaning of intake air, low-noise operation and limited mounting space

- Motor type: AC
- Impeller type: Centrifugal backward curved blades
- Casing material: Coated steel
- Installation in any position



	Unit of measurement	KSV 150 G4/C
Connected air duct size	in	6"
Speed	-	1
Phases	-	1
Minimum supply voltage	V	230
Maximum supply voltage	V	230
Power supply frequency	Hz	50/60
Rated power	W	107
Maximum unit current	A	0.49
Maximum performance @0.1"	CFM	259
Ingress protection rating	-	IPX4

## Dimensions

ØD	L	H	B	L1	B1	L2	B2
5 7/8"	27 3/4"	9 7/8"	16 3/8"	31 5/8"	20"	25 5/8"	18"

