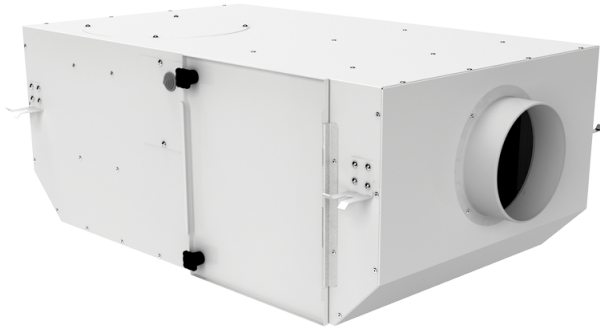


KSV 150 Q G4

Sound-insulated centrifugal fans with filters. Designed for integration into supply and exhaust, ventilation systems requiring high cleaning of intake air, low-noise operation and limited mounting space

- Motor type: AC
- Impeller type: Centrifugal backward curved blades
- Casing material: Coated steel
- Installation in any position



	Unit of measurement	KSV 150 Q G4
Connected air duct size	in	6"
Speed	-	1
Phases	-	1
Minimum supply voltage	V	230
Maximum supply voltage	V	230
Power supply frequency	Hz	50/60
Rated power	W	63
Maximum unit current	A	0.29
Maximum performance @0.1"	CFM	212
Ingress protection rating	-	IPX4

Dimensions

ØD	L	H	B	L1	B1	L2	B2
5 7/8"	29"	11 3/4"	17 3/8"	32 7/8"	21"	26 3/4"	19"

