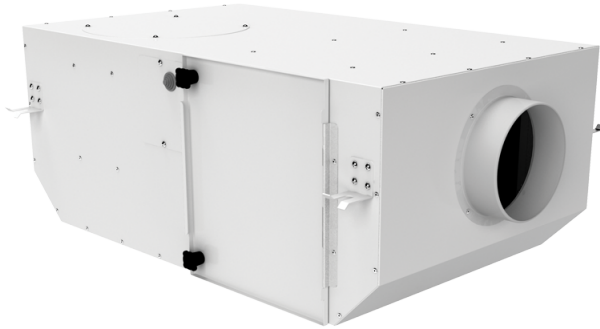


# KSV 150 Q G4/H13/C

Centrifugal inline fans with forward curved blades in sound-insulated casings with filters

- Impeller type: Centrifugal impeller with backward curved blades
- Casing material: Coated steel
- Installation in any position



	Unit of measurement	KSV 150 Q G4/H13/C
Connected air duct size	in	6"
Phases	-	1
Minimum supply voltage	V	230
Maximum supply voltage	V	230
Power supply frequency	Hz	50/60
Rated power	W	59
Maximum unit current	A	0.28
Ingress protection rating	-	IPX4
Impeller material	-	Plastic

## Dimensions

ØD	L	H	B	L1	B1	L2	B2
5 7/8"	29"	11 3/4"	17 3/8"	32 7/8"	21"	26 3/4"	19"

