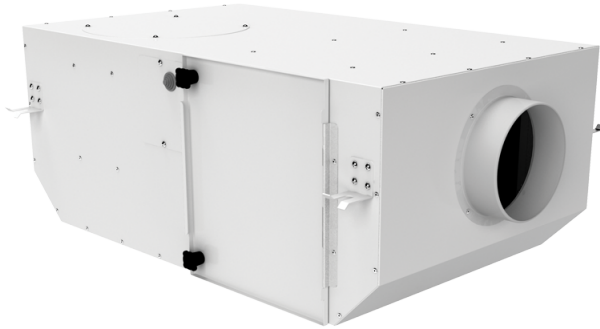


# KSV 200 Duo G4

Centrifugal inline fans with forward curved blades in sound-insulated casings with filters

- Impeller type: Centrifugal impeller with backward curved blades
- Casing material: Coated steel
- Installation in any position



	Unit of measurement	KSV 200 Duo G4	
Speed	-	1	2
Connected air duct size	in	8"	
Phases	-	1	
Minimum supply voltage	V	230	
Maximum supply voltage	V	230	
Power supply frequency	Hz	50/60	
Rated power	W	106	123
Maximum unit current	A	0.47	0.59
Ingress protection rating	-	IPX4	
Impeller material	-	Plastic	

## Dimensions

ØD	L	H	B	L1	B1	L2	B2
7 7/8"	29"	11 3/4"	23 3/4"	32 7/8"	27 1/2"	26 3/4"	25 1/2"

