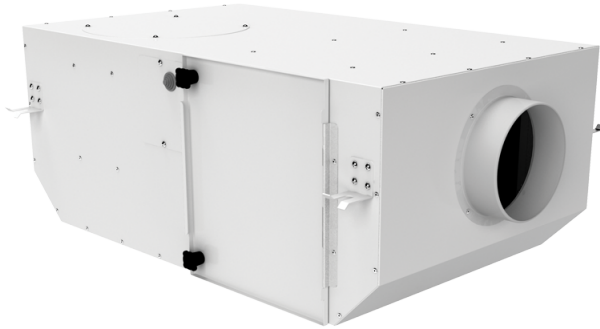


KSV 200 Duo G4/H13

Centrifugal inline fans with forward curved blades in sound-insulated casings with filters

- Impeller type: Centrifugal impeller with backward curved blades
- Casing material: Coated steel
- Installation in any position



| | Unit of measurement | KSV 200 Duo G4/H13 | |
|---------------------------|---------------------|--------------------|------|
| Speed | - | 1 | 2 |
| Connected air duct size | in | 8" | |
| Phases | - | 1 | |
| Minimum supply voltage | V | 230 | |
| Maximum supply voltage | V | 230 | |
| Power supply frequency | Hz | 50/60 | |
| Rated power | W | 97 | 119 |
| Maximum unit current | A | 0.43 | 0.55 |
| Ingress protection rating | - | IPX4 | |
| Impeller material | - | Plastic | |

Dimensions

| ∅D | L | H | B | L1 | B1 | L2 | B2 |
|--------|-----|---------|---------|---------|---------|---------|---------|
| 7 7/8" | 29" | 11 3/4" | 23 3/4" | 32 7/8" | 27 1/2" | 26 3/4" | 25 1/2" |

