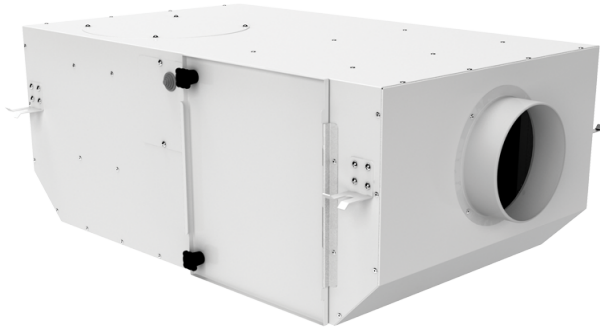


KSV 200 G4

Sound-insulated centrifugal fans with filters. Designed for integration into supply and exhaust, ventilation systems requiring high cleaning of intake air, low-noise operation and limited mounting space

- Motor type: AC
- Impeller type: Centrifugal backward curved blades
- Casing material: Coated steel
- Installation in any position



	Unit of measurement	KSV 200 G4
Connected air duct size	in	8"
Speed	-	1
Phases	-	1
Minimum supply voltage	V	230
Maximum supply voltage	V	230
Power supply frequency	Hz	50/60
Rated power	W	123
Maximum unit current	A	0.56
Maximum performance @0.1"	CFM	341
Ingress protection rating	-	IPX4

Dimensions

∅D	L	H	B	L1	B1	L2	B2
7 7/8"	29"	11 3/4"	23 3/4"	32 7/8"	27 1/2"	26 3/4"	25 1/2"

