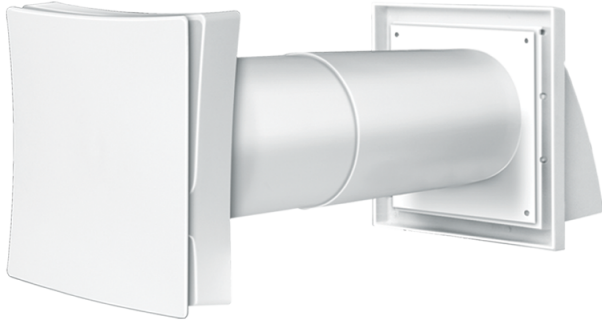


# PS 102

Through the wall ventilation is intake ventilation unit for constant ventilation and designed for supplying fresh air to residential or nonresidential premises

- Casing material: ABS Plastic



	Unit of measurement	PS 102
Minimum supply voltage	V	120
Maximum supply voltage	V	120
Power supply frequency	Hz	60

## Dimensions

L	H	H1	ØD
8 1/16" - 5 1/8"	6 7/16" - 1 5/16"	6 1/16"	4 1/16"

