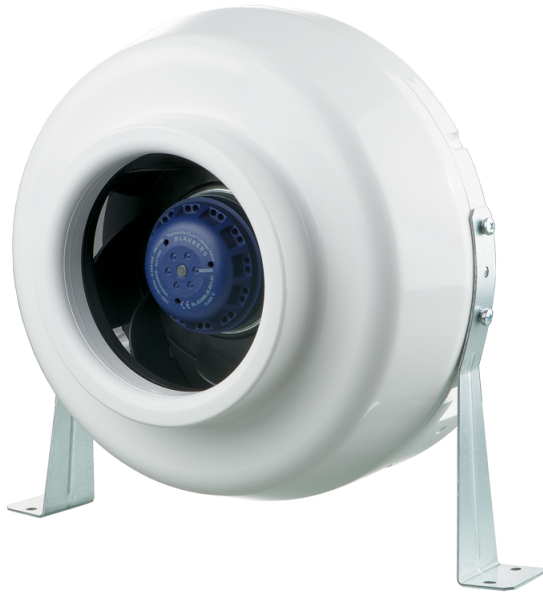


VK 100 EC



Supply and exhaust ventilation and air conditioning systems of various premises requiring cost-saving controllable ventilation

- Motor type: EC
- Impeller type: Centrifugal backward curved blades
- Casing material: Plastic
- Installation in any position

	Unit of measurement	VK 100 EC
Connected air duct size	in	4"
Speed	-	1
Minimum supply voltage	V	120
Maximum supply voltage	V	120
Power supply frequency	Hz	60
Rated power	W	29.5
Maximum unit current	A	0.53
Maximum performance @0.2"	CFM	115

Dimensions

ØD	ØD1	B	L	L1	L2	L3
3 15/16"	9 13/16"	10 5/8"	9 1/16"	1 3/16"	1 1/16"	1 3/16"

