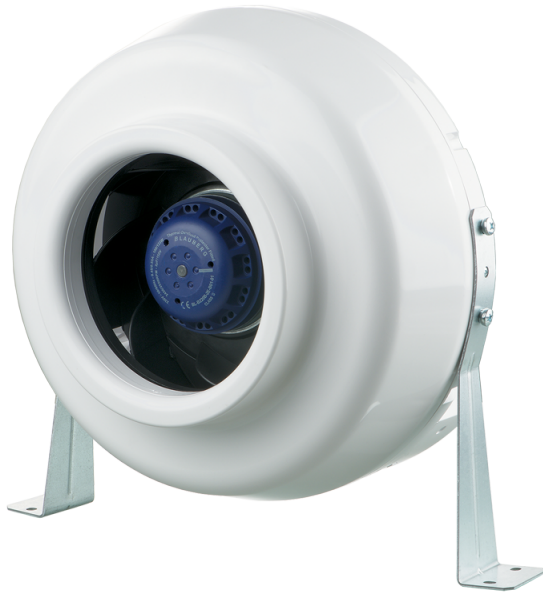


# VK 125 EC



Supply and exhaust ventilation and air conditioning systems of various premises requiring cost-saving controllable ventilation

- Motor type: EC
- Impeller type: Centrifugal backward curved blades
- Casing material: Plastic
- Installation in any position

	Unit of measurement	VK 125 EC
Connected air duct size	in	5"
Speed	-	1
Minimum supply voltage	V	120
Maximum supply voltage	V	120
Power supply frequency	Hz	60
Rated power	W	41
Maximum unit current	A	0.63
Maximum performance @0.1"	CFM	
Maximum performance @0.2"	CFM	163

## Dimensions

ØD	ØD1	B	L	L1	L2	L3
4 15/16"	9 13/16"	10 5/8"	8 11/16"	1 3/16"	1 1/16"	1 3/16"

