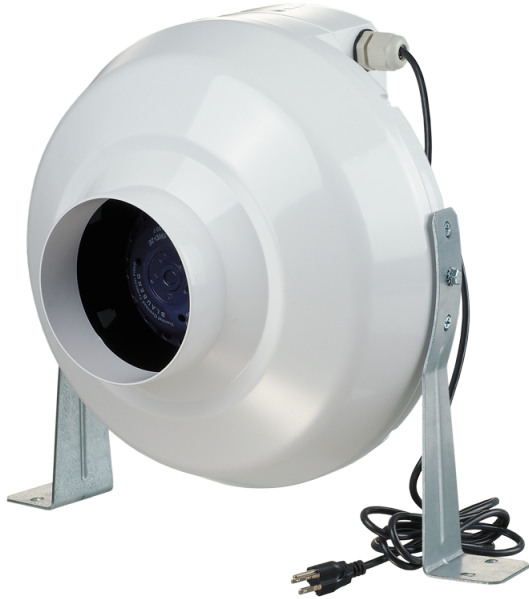


VK 200



The VENTS VK Series duct mounted centrifugal inline fans are suitable for a wide range of residential and commercial exhaust or supply air applications, such as bathrooms, kitchens, restaurants or equipment cooling.

- Motor type: AC
- Impeller type: Centrifugal backward curved blades
- Casing material: Plastic
- Installation in any position

	Unit of measurement	VK 200
Connected air duct size	in	8"
Speed	-	1
Minimum supply voltage	V	120
Maximum supply voltage	V	120
Power supply frequency	Hz	60
Rated power	W	149
Maximum unit current	A	1.25
Maximum performance @0.1"	CFM	
Maximum performance @0.2"	CFM	520
rotation speed at 60hz	-	2781

Dimensions

ØD	ØD1	B	L	L1	L2	L3
7 7/8"	13 3/8"	13 15/16"	10 7/8"	1 3/16"	1 3/16"	1 9/16"

