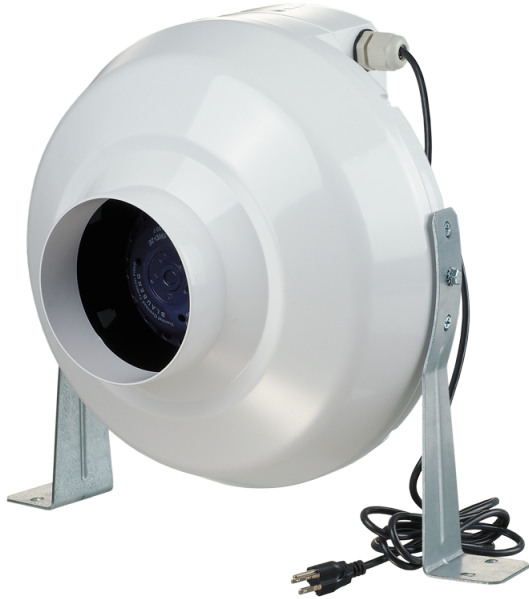


VK 200 P



The VENTS VK Series duct mounted centrifugal inline fans are suitable for a wide range of residential and commercial exhaust or supply air applications, such as bathrooms, kitchens, restaurants or equipment cooling.

- Motor type: AC
- Control: Built-in speed controller
- Impeller type: Centrifugal backward curved blades
- Casing material: Plastic
- Installation in any position
- Cable with mains plug

| | Unit of measurement | VK 200 P |
|---------------------------|---------------------|----------|
| Connected air duct size | in | 8" |
| Speed | - | 1 |
| Minimum supply voltage | V | 120 |
| Maximum supply voltage | V | 120 |
| Power supply frequency | Hz | 60 |
| Rated power | W | 149 |
| Maximum performance @0.1" | CFM | 507 |

Dimensions

| ØD | ØD1 | B | L | L1 | L2 | L3 |
|--------|---------|-----------|---------|---------|---------|---------|
| 7 7/8" | 13 3/8" | 13 15/16" | 10 7/8" | 1 3/16" | 1 3/16" | 1 9/16" |

