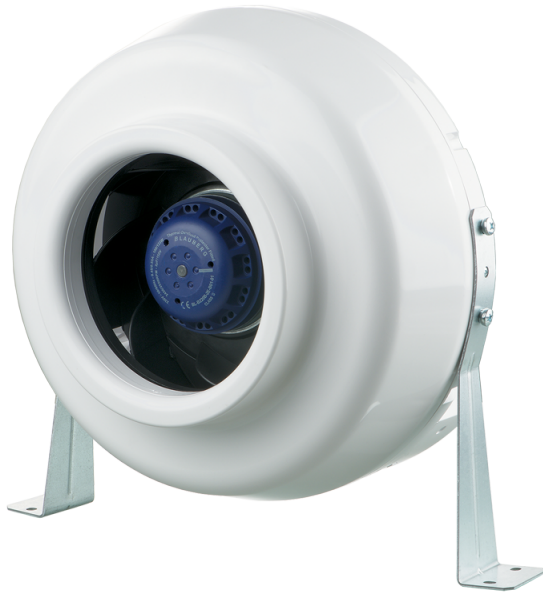


VK 250 EC



Supply and exhaust ventilation and air conditioning systems of various premises requiring cost-saving controllable ventilation

- Motor type: EC
- Impeller type: Centrifugal backward curved blades
- Casing material: Plastic
- Installation in any position

	Unit of measurement	VK 250 EC
Connected air duct size	in	10"
Speed	-	1
Minimum supply voltage	V	120
Maximum supply voltage	V	120
Power supply frequency	Hz	60
Rated power	W	131
Maximum unit current	A	1.87
Maximum performance @0.2"	CFM	630

Dimensions

ØD	ØD1	B	L	L1	L2	L3
9 13/16"	13 3/8"	13 15/16"	10 7/16"	1 3/16"	1 3/16"	1 9/16"

