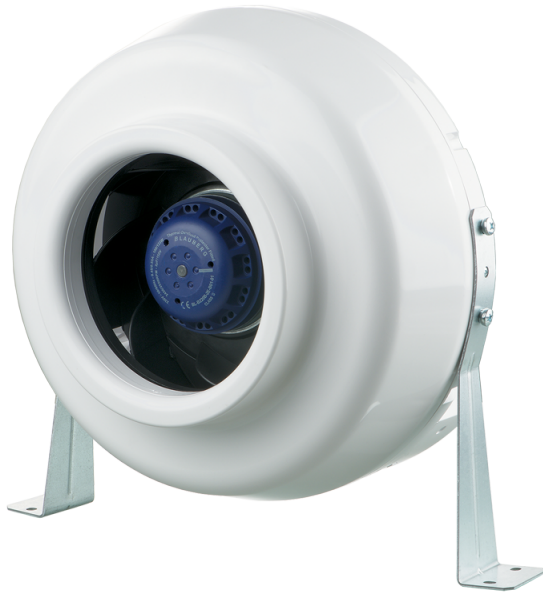


VK 315 EC



Supply and exhaust ventilation and air conditioning systems of various premises requiring cost-saving controllable ventilation

- Motor type: EC
- Impeller type: Centrifugal backward curved blades
- Casing material: Plastic
- Installation in any position

	Unit of measurement	VK 315 EC
Connected air duct size	in	12"
Speed	-	1
Minimum supply voltage	V	120
Maximum supply voltage	V	120
Power supply frequency	Hz	60
Rated power	W	170
Maximum unit current	A	2.37
Maximum performance @0.2"	CFM	774

Dimensions

ØD	ØD1	B	L	L1	L2	L3
12 3/8"	15 3/4"	16 5/16"	16 5/16"	1 9/16"	2 3/16"	1 9/16"

