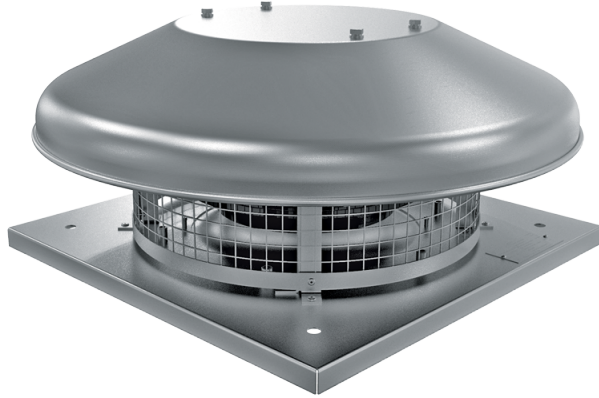


VKHCA 190 EC



Aluminum roof fans

- Sound pressure level LpA at 3 m: 52
- Sound pressure level LpA at 3 m: 52
- Motor type: EC
- Impeller type: Centrifugal impeller with backward curved blades
- Casing material: Aluminium

	Unit of measurement	VKHCA 190 EC
Speed	-	1
Phases	-	1
Minimum supply voltage	V	230
Maximum supply voltage	V	230
Power supply frequency	Hz	60
Rated power	W	
Rated power	W	110
Unit current	A	
Maximum unit current	A	0.87
Maximum airflow	m ³ /h	
Maximum airflow	m ³ /h	
Maximum performance @0.1"	CFM	453
rotation speed at 50hz	-	
rotation speed at 60hz	-	3538
Sound pressure level LpA at 3 m	dB(A)	52
Sound pressure level LpA at 3 m	dB(A)	52
Weight	kg	0
Transported air temperature (max)	°C	0
Transported air temperature (min)	°C	0
Ingress protection rating	-	IPX4

Ingress protection rating of the drive	-	IP55
--	---	------

Dimensions