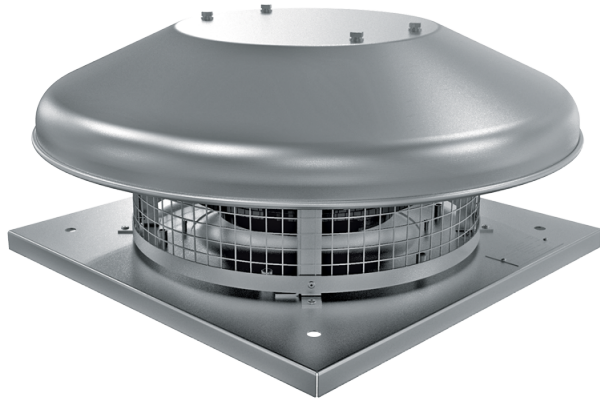


VKHCA 280 EC



Aluminum roof fans

- Sound pressure level LpA at 3 m: 48
- Sound pressure level LpA at 3 m: 48
- Motor type: EC
- Impeller type: Centrifugal impeller with backward curved blades
- Casing material: Aluminium

	Unit of measurement	VKHCA 280 EC
Speed	-	1
Phases	-	1
Minimum supply voltage	V	230
Maximum supply voltage	V	230
Power supply frequency	Hz	60
Rated power	W	
Rated power	W	195
Unit current	A	
Maximum unit current	A	1.53
Maximum airflow	m ³ /h	
Maximum airflow	m ³ /h	
Maximum performance @0.1"	CFM	1413
rotation speed at 50hz	-	
rotation speed at 60hz	-	2610
Sound pressure level LpA at 3 m	dB(A)	48
Sound pressure level LpA at 3 m	dB(A)	48
Weight	kg	0
Transported air temperature (max)	°C	0
Transported air temperature (min)	°C	0
Ingress protection rating	-	IPX4

Ingress protection rating of the drive	-	IP55
--	---	------

Dimensions

Ecodesign

Trademark	Vents
Model	VKHCA 280 EC
Type of drive installed	Integrated VSD
Type of heat recovery system	None
Nominal flow rate (m ³ /s)	0.248
Nominal external pressure (Pa)	336
Maximum external leakage rates (%)	2.7
Static efficiency (%)	60.1
Declared typology	NRVU UVU
Sound power level (dB(A))	67
Effective electric power input (kW)	0.162