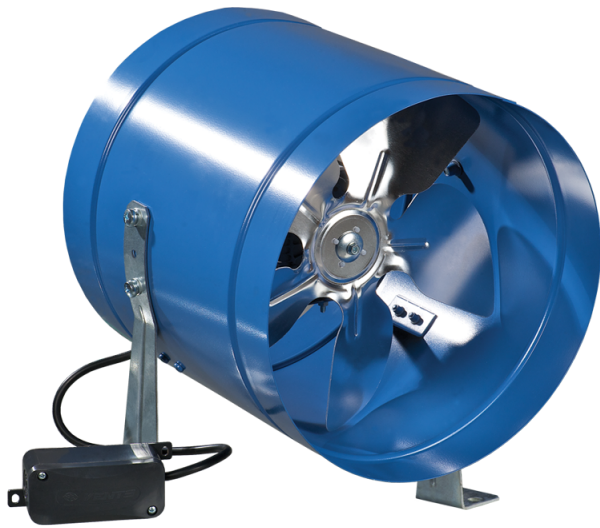


# VKOM 200



Specially designed for mounting inside ventilation shaft, VKOM fans are the perfect air movers

- Motor type: AC
- Impeller type: Axial
- Casing material: Coated steel
- Installation in any position

	Unit of measurement	VKOM 200
Connected air duct size	in	8"
Speed	-	1
Minimum supply voltage	V	120
Maximum supply voltage	V	120
Power supply frequency	Hz	60
Rated power	W	43
Maximum unit current	A	0.63

## Dimensions

ØD	L	K
8 1/8"	8 11/16"	1 9/16"

