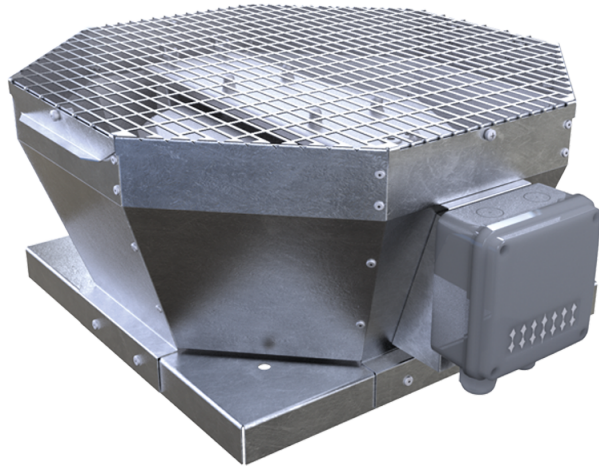


# VKVA 190 EC



## Aluminum roof fans

- Sound pressure level LpA at 3 m: 52
- Sound pressure level LpA at 3 m: 52
- Motor type: EC
- Impeller type: Centrifugal impeller with backward curved blades
- Casing material: Galvanized steel

	Unit of measurement	VKVA 190 EC
Speed	-	1
Phases	-	1
Minimum supply voltage	V	230
Maximum supply voltage	V	230
Power supply frequency	Hz	60
Rated power	W	
Rated power	W	102
Unit current	A	
Maximum unit current	A	0.77
Maximum airflow	m <sup>3</sup> /h	
Maximum airflow	m <sup>3</sup> /h	
Maximum performance @0.1"	CFM	394
rotation speed at 50hz	-	
rotation speed at 60hz	-	3520
Sound pressure level LpA at 3 m	dB(A)	52
Sound pressure level LpA at 3 m	dB(A)	52
Weight	kg	0
Transported air temperature (max)	°C	60
Transported air temperature (min)	°C	-25
Ingress protection rating	-	IPX4

Ingress protection rating of the drive	-	IP55
--	---	------

## Dimensions

## Ecodesign



Trademark	Vents					
Model	VKVA 190 EC					
Specific energy consumption (SEC) (kWh/(m <sup>2</sup> /a))	Cold		Average		Warm	
	-53.3	A+	-26.2	B	-10.7	E
Type of ventilation unit	Unidirectional					
Type of drive installed	Multi-speed					
Type of heat recovery system	None					
Maximum flow rate (m <sup>3</sup> /h)	88					
Electric power input (W)	14					
Reference flow rate (m <sup>3</sup> /s)	0.017					
Specific power input (SPI) (W/(m <sup>3</sup> /h))	0.102					
Control typology	Local demand control					
Maximum external leakage rates (%)	2.7					
Sound power level (dB(A))	53					
Declared typology	RVU UVU					
The annual electricity consumption (AEC) (kWh/a)	Cold		Average		Warm	
	83		83		83	
The annual heating saved (AHS) (kWh/a)	Cold		Average		Warm	
	5536		2830		1280	