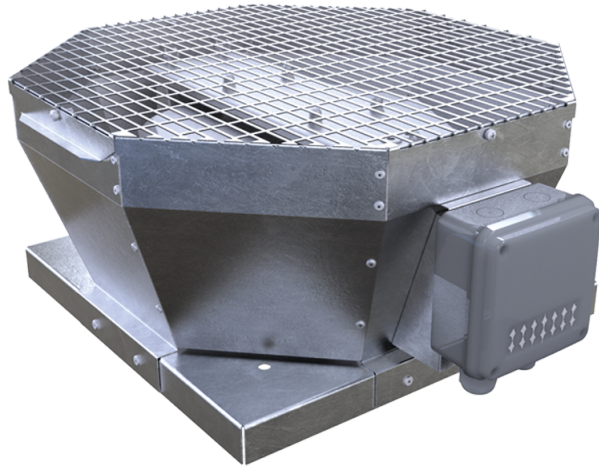


VKVA 400 EC



Aluminum roof fans

- Sound pressure level LpA at 3 m: 58
- Sound pressure level LpA at 3 m: 58
- Motor type: EC
- Impeller type: Centrifugal impeller with backward curved blades
- Casing material: Galvanized steel

	Unit of measurement	VKVA 400 EC
Speed	-	1
Phases	-	1
Minimum supply voltage	V	230
Maximum supply voltage	V	230
Power supply frequency	Hz	60
Rated power	W	
Rated power	W	526
Unit current	A	
Maximum unit current	A	3.9
Maximum airflow	m ³ /h	
Maximum airflow	m ³ /h	
Maximum performance @0.1"	CFM	3167
rotation speed at 50hz	-	
rotation speed at 60hz	-	1450
Sound pressure level LpA at 3 m	dB(A)	58
Sound pressure level LpA at 3 m	dB(A)	58
Weight	kg	0
Transported air temperature (max)	°C	50
Transported air temperature (min)	°C	-25
Ingress protection rating	-	IPX4

Ingress protection rating of the drive	-	IP54
----------------------------------------	---	------

Dimensions

Ecodesign

Trademark	Vents
Model	VKVA 400 EC
Type of drive installed	Integrated VSD
Type of heat recovery system	None
Nominal flow rate (m ³ /s)	0.886
Nominal external pressure (Pa)	341
Maximum external leakage rates (%)	2.7
Static efficiency (%)	65.8
Effective electric power input (kW)	0.519
Sound power level (dB(A))	78
Declared typology	NRVU UVU