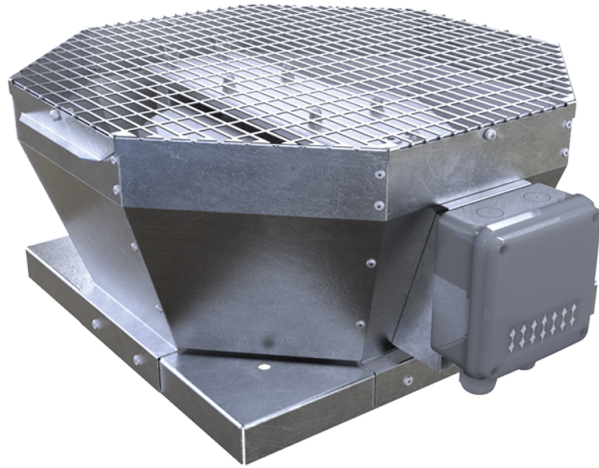


# VKVA 630 EC



## Aluminum roof fans

- Sound pressure level LpA at 3 m: 71
- Sound pressure level LpA at 3 m: 71
- Motor type: EC
- Impeller type: Centrifugal impeller with backward curved blades
- Casing material: Galvanized steel

	Unit of measurement	VKVA 630 EC
Phases	-	3
Minimum supply voltage	V	400
Maximum supply voltage	V	400
Power supply frequency	Hz	60
Rated power	W	2973
Maximum unit current	A	4.66
Maximum performance @0.1"	CFM	10753
Rotation speed at 60hz	-	1450
Sound pressure level LpA at 3 m	dB(A)	71
Sound pressure level LpA at 3 m	dB(A)	71
Transported air temperature (max)	°C	55
Transported air temperature (min)	°C	-25
Ingress protection rating	-	IPX4
Ingress protection rating of the drive	-	IP54
Impeller material	-	Plastic

## Dimensions

## Ecodesign

Trademark	Vents
Model	VKVA 630 EC
Type of drive installed	Integrated VSD
Type of heat recovery system	None
Nominal flow rate (m <sup>3</sup> /s)	3.596
Nominal external pressure (Pa)	465
Maximum external leakage rates (%)	2.7
Static efficiency (%)	62.1
Declared typology	NRVU UVU
Effective electric power input (kW)	2.901
Sound power level (dB(A))	91