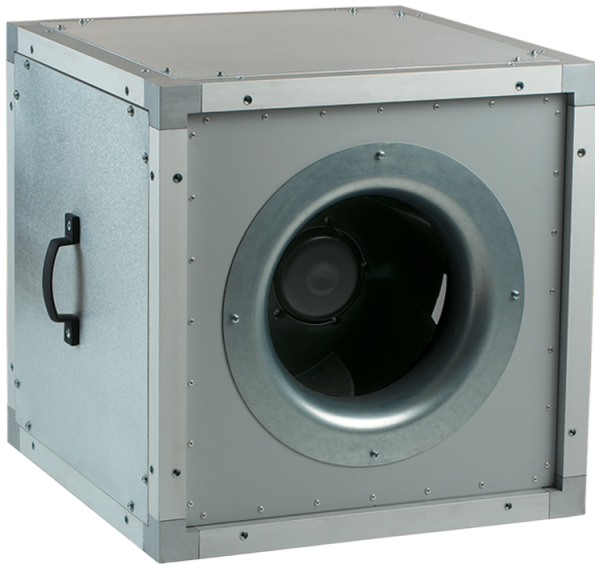


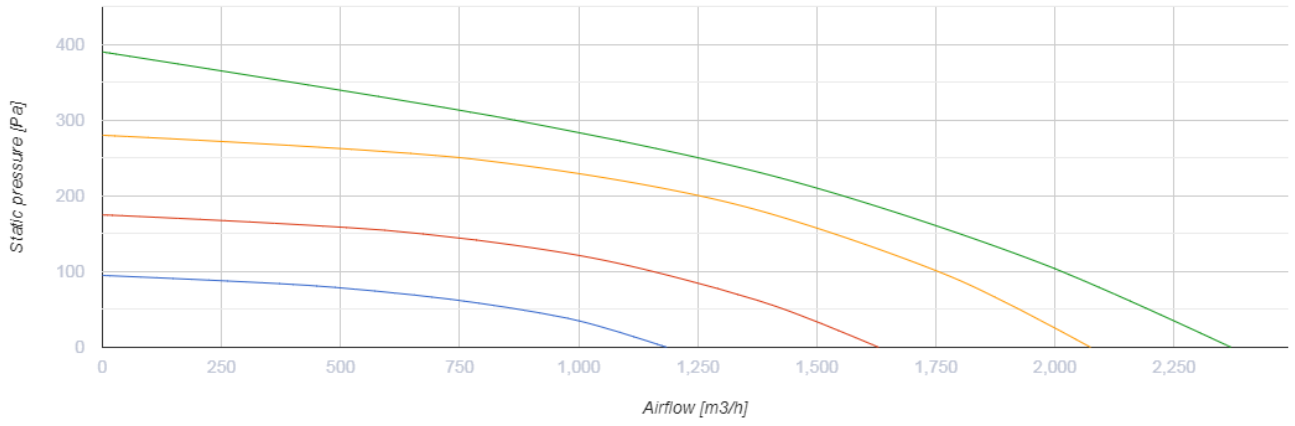
# VS 315 EC



Inline centrifugal fans in heat- and sound-insulated casing

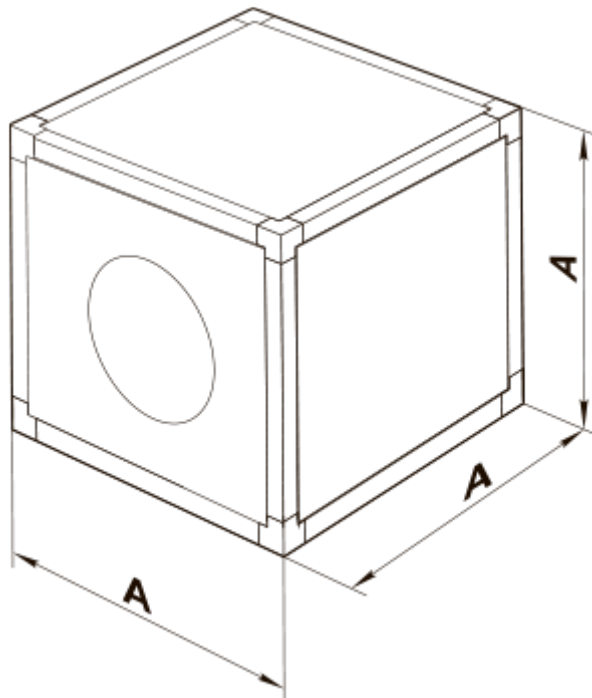
- Maximum airflow: 2370
- Maximum airflow: 2370
- Sound pressure level LpA at 3 m: 35
- Sound pressure level LpA at 3 m: 35
- Sound insulation
- Motor type: EC
- Impeller type: Centrifugal impeller with backward curved blades
- Casing material: Aluzinc
- Installation in any position

	Unit of measurement	VS 315 EC
Connected air duct size	mm	315
Speed	-	1
Minimum supply voltage	V	200
Maximum supply voltage	V	240
Power supply frequency	Hz	50/60
Rated power	W	150
Rated power	W	150
Unit current	A	1.23
Maximum unit current	A	1.23
Maximum airflow	m <sup>3</sup> /h	2370
Maximum airflow	m <sup>3</sup> /h	2370
Sound pressure level LpA at 3 m	dB(A)	35
Sound pressure level LpA at 3 m	dB(A)	35
Weight	kg	25.7
Transported air temperature (max)	°C	80
Transported air temperature (min)	°C	-40
Ingress protection rating	-	IPX4



## Dimensions

<b>A</b>
500



## Ecodesign

Trademark	Vents
Model	VS 315 EC
Type of drive installed	Integrated VSD
Type of heat recovery system	None
Nominal flow rate (m <sup>3</sup> /s)	0.404
Nominal external pressure (Pa)	223
Maximum external leakage rates (%)	2.7
Static efficiency (%)	70.2
Effective electric power input (kW)	0.15
Sound power level (dB(A))	55
Declared typology	NRVU UVU