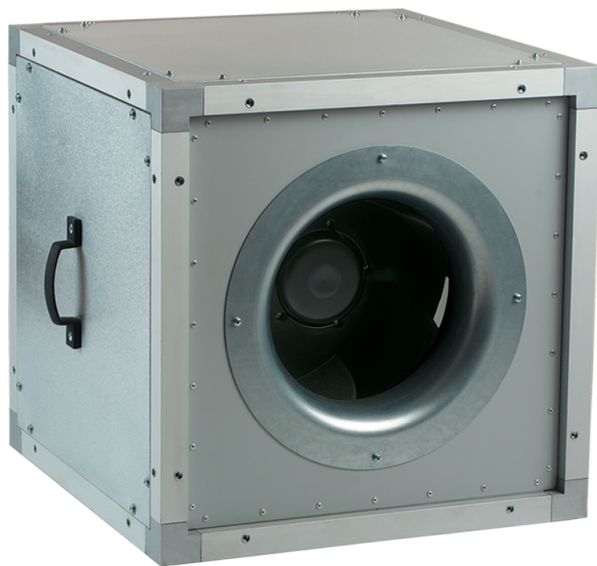


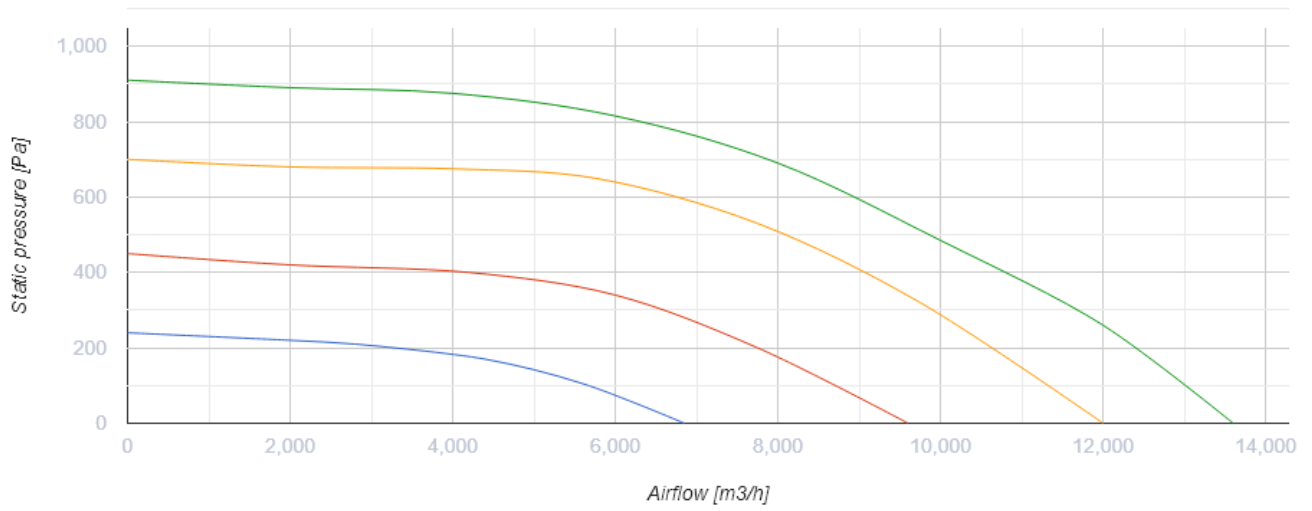
# VS 560 EC



Inline centrifugal fans in heat- and sound-insulated casing

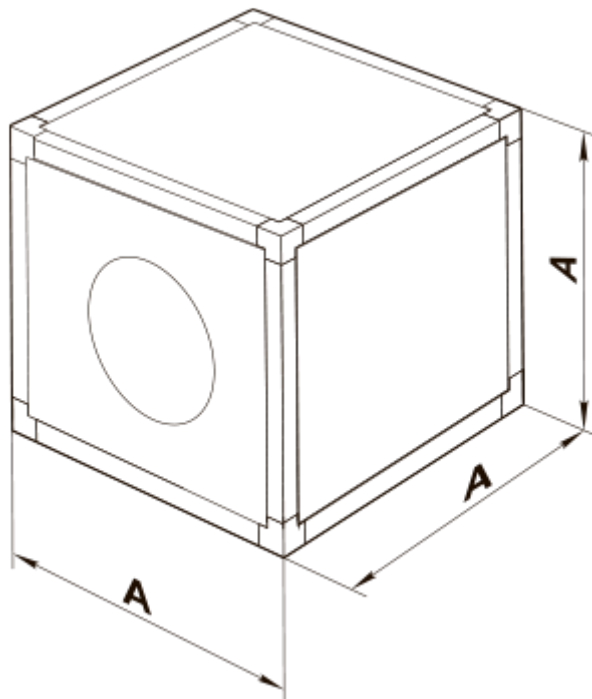
- Maximum airflow: 13600
- Maximum airflow: 13600
- Sound pressure level LpA at 3 m: 50
- Sound pressure level LpA at 3 m: 50
- Sound insulation
- Motor type: EC
- Impeller type: Centrifugal impeller with backward curved blades
- Casing material: Aluzinc
- Installation in any position

	Unit of measurement	VS 560 EC
Connected air duct size	mm	560
Speed	-	1
Minimum supply voltage	V	380
Maximum supply voltage	V	480
Power supply frequency	Hz	50/60
Rated power	W	2360
Rated power	W	2360
Unit current	A	3.65
Maximum unit current	A	3.65
Maximum airflow	m <sup>3</sup> /h	13600
Maximum airflow	m <sup>3</sup> /h	13600
Sound pressure level LpA at 3 m	dB(A)	50
Sound pressure level LpA at 3 m	dB(A)	50
Weight	kg	60.5
Transported air temperature (max)	°C	60
Transported air temperature (min)	°C	-25
Ingress protection rating	-	IPX4



## Dimensions

<b>A</b>
800



## Ecodesign

Trademark	Vents
Model	VS 560 EC
Type of drive installed	Integrated VSD
Type of heat recovery system	None
Nominal flow rate (m <sup>3</sup> /s)	2.292
Nominal external pressure (Pa)	684
Maximum external leakage rates (%)	2.7
Static efficiency (%)	72
Effective electric power input (kW)	2.36
Sound power level (dB(A))	70
Declared typology	NRVU UVU