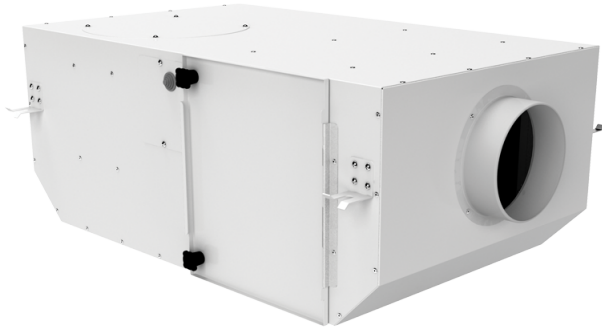







Series **KSV Duo**



Centrifugal inline fans with forward curved blades in sound-insulated casings with filters

- Motor type: AC
- Impeller type: Centrifugal backward curved blades
- Casing material: Coated steel



Lineup	Connected air duct size, in	Rated power, W
 KSV 100 Duo G4	✓	42
 KSV 100 Duo G4/F8	✓	41
 KSV 100 Duo G4/F8/C	✓	41
 KSV 100 Duo G4/H13	✓	41
 KSV 100 Duo G4/H13/C	✓	41
 KSV 150 Duo Q G4	✓	52
 KSV 150 Duo Q G4/C	✓	52

 KSV 150 Duo Q G4/F8	✓	50
 KSV 150 Duo Q G4/F8/C	✓	50
 KSV 150 Duo Q G4/H13	✓	48
 KSV 150 Duo Q G4/H13/C	✓	48
 KSV 150 Duo G4	✓	117
 KSV 150 Duo G4/C	✓	117
 KSV 150 Duo G4/F8	✓	115
 KSV 150 Duo G4/F8/C	✓	115
 KSV 150 Duo G4/H13	✓	114
 KSV 150 Duo G4/H13/C	✓	114
 KSV 200 Duo G4	✓	123
 KSV 200 Duo G4/C	✓	123
 KSV 200 Duo G4/F8	✓	121
 KSV 200 Duo G4/F8/C	✓	121

 KSV 200 Duo G4/H13	✓	119
 KSV 200 Duo G4/H13/C	✓	119