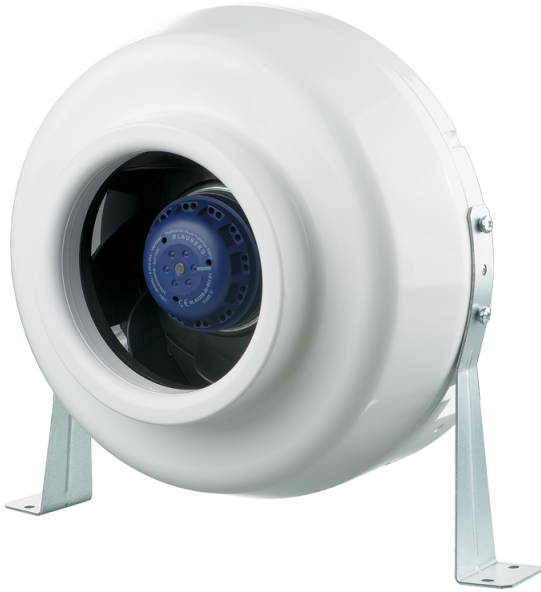


Series **VK EC**



Supply and exhaust ventilation and air conditioning systems of various premises requiring cost-saving controllable ventilation

- Motor type: EC
- Impeller type: Centrifugal backward curved blades
- Casing material: Plastic

Lineup	Connected air duct size, in	Rated power, W
 VK 100 EC	✓	29.5
 VK 125 EC	✓	41
 VK 150 EC	✓	76
 VK 200 EC	✓	99
 VK 250 EC	✓	131
 VK 315 EC	✓	170