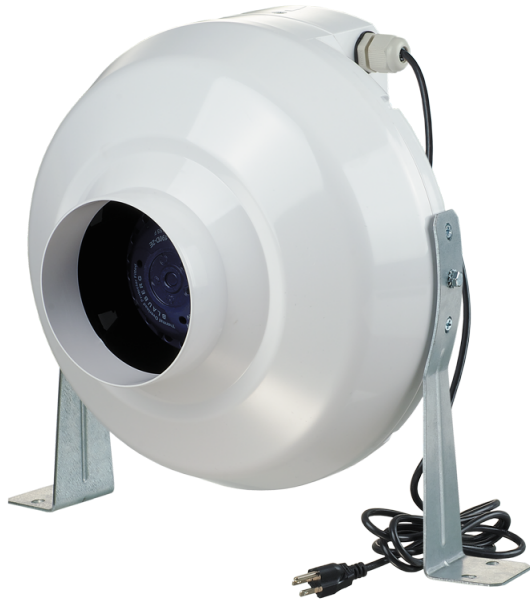


Series **VK**



The VENTS VK Series duct mounted centrifugal inline fans are suitable for a wide range of residential and commercial exhaust or supply air applications, such as bathrooms, kitchens, restaurants or equipment cooling.

- Motor type: AC
- Impeller type: Centrifugal backward curved blades
- Casing material: Plastic

Lineup	Connected air duct size, in	Rated power, W
 VK 100	✓	88.5
 VK 125	✓	114
 VK 150	✓	93
 VK 200	✓	149
 VK 250	✓	266
 VK 315	✓	269