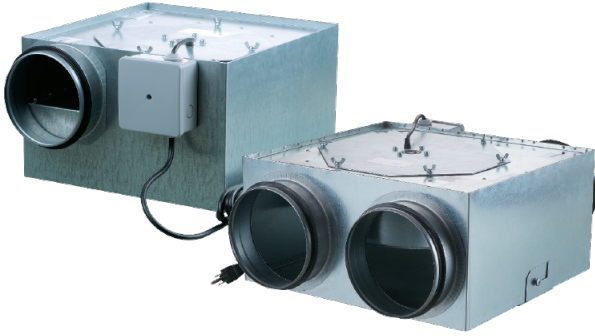






Series VKP

VKP/VKPF fans are specially designed for extract and input ventilation and are perfect air movement solution for areas with tight spaces

- Motor type: AC
- Impeller type: Centrifugal backward curved blades
- Casing material: Coated steel



| Lineup | Connected air duct size, in | Rated power, W | Maximum performance @0.1", CFM |
|---|-----------------------------|----------------|--------------------------------|
|  VKP 125 | ✓ | 66 | 211 |
|  VKP 150 | ✓ | 102 | 296 |
|  VKP 125/125*2 | ✓ | 74 | 244 |
|  VKP 150/150*2 | ✓ | 119 | 360 |